



Grants and Loans Status Report

IFC Board of Directors Meeting
January 11, 2023



TRANSFORMING WASTEWATER TO RESOURCES

Benefits of Grants and Loans

Grants for planning studies, research and development, construction

- Leverage local funds with state and federal funding
- Partner to advance knowledge and test new technology
- Prepare planning studies to assess project feasibility

Low-interest loans for construction

- Effectively manage cash flow
- Spread costs over project life; reduce potential for sharp rate increases and financials impact on customers
- Benefit from grant equivalency properties of low-interest loans

Grant and Loan Awards to District

Calendar Period	Grant/Loan Funding Agreements	Grant Awards (maximum)	Loan Awards (maximum)	Totals
2008-2022	28	\$15.6M	\$52.4M	\$68.0M
2023 (Anticipated)	1	\$0.1M	\$0M	\$0.1M
Total	29	\$15.7M	\$52.4M	\$68.1M

2022 Work

Pump Station Facilities Repair

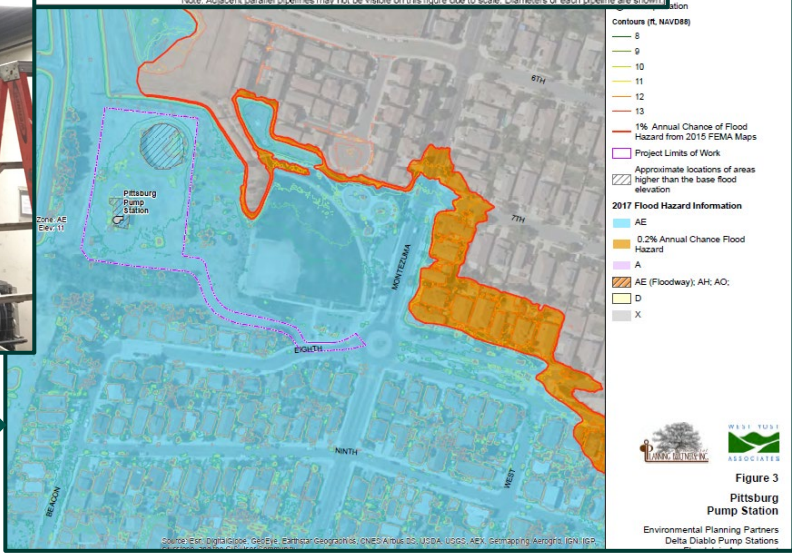


**\$13.5M CWSRF
Loan Agreement**



**Pump Station Flood
Mitigation Project**

**Flood Mitigation
Cal OES/FEMA
\$1.6M Grant**



2022 Work

CalRecycle Marine Flare Collection

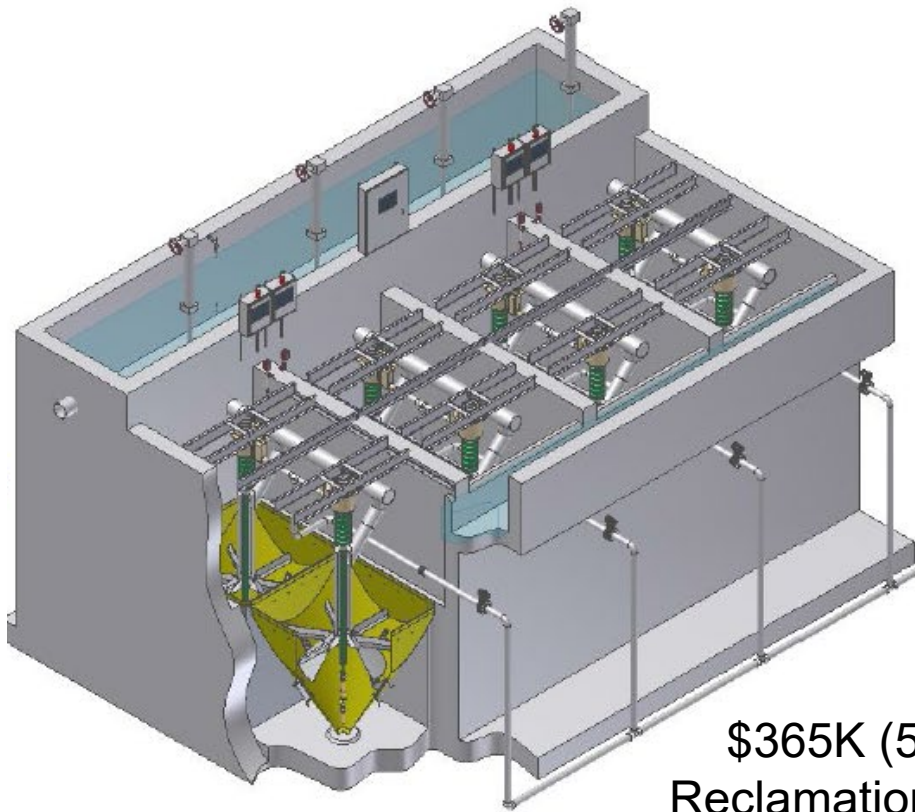


- \$100,000 grant for Delta Household Hazardous Waste Collection Facility partners (Delta Diablo, Antioch, Pittsburg, Brentwood, Oakley, and Contra Costa County)
- Provide outreach and education and host marine flare collection events
- Contract with California Product Stewardship Council



2022 Work

RWF Sand Filter Upgrade



Convert from continuous to intermittent filter backwash

Project Benefits

- Reduces reject water 60-90%
- Reduces energy 60-90%
- Reduces pretreatment chemical usage
- Reduces maintenance
- Improves filtrate quality

\$365K (50% grant) award from U.S. Bureau of Reclamation. Agreement executed and construction began in fall 2021 and completed in fall 2022. Full grant reimbursement anticipated in 2023.

COVID-19 FEMA/Cal OES Public Assistance Request



- Federal Emergency Declaration issued March 13, 2020
- As an essential facility, District submitted a request for 75% reimbursement of eligible expenses from declaration date through September 14, 2020
 - Included personal protective equipment, sanitizing and disinfecting, temporary barriers, O&M staff overtime
 - District has been informed that approximately \$60,000 of the originally requested funding will be eligible for reimbursement.
 - There is an opportunity to seek additional funding for expenses that were incurred after the original reimbursement funding deadline

CWSRF Loan Program Status



- Current Interest Rate = 2.60% (half of general obligation bond rate)
- Federal Infrastructure Investment and Jobs Act (H.R. 3684)
 - Expected to add \$12.8B total to CWSRF programs over 5 years
 - CWSRF program loans are in high demand and oversubscribed with total project funding applications exceeding \$9B
- State Budget Act of 2021
 - Specifies \$650M in wastewater funding with priority given to septic-to-sewer conversions
- State Water Board Administrative Actions
 - Annual Fundable List based on priority scoring system
 - Priority given to projects that improve water quality, increases water supply (recycling), and have a “climate change” action plan or policy
 - Will seek CWSRF funding for projects that align with these goals

CWSRF Loan Alternatives

- California Infrastructure Bank
 - Slightly below market rate interest
 - Cap of ~\$25M per agency
- Bonds
 - Market rate
 - Greater flexibility on timing and bundling of projects
 - Greater funding amounts to meet needs



2023 Funding Actions

- Submit SRF Loan application for large-scale projects
 - Demonstrates project viability and interest in securing state and federal funding in the next federal appropriations cycle
 - Supports data gathering necessary to pursue alternative funding (e.g., bonds)
- Advocate for priority legislative issues through wastewater industry groups
- Monitor for grant and loan funding opportunities
 - Greenhouse Gas Reduction
 - Water Recycling
 - Renewable Energy & Energy Efficiency – 2022 Inflation Reduction Act federal tax credits

